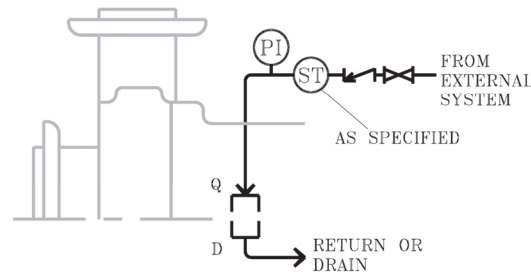
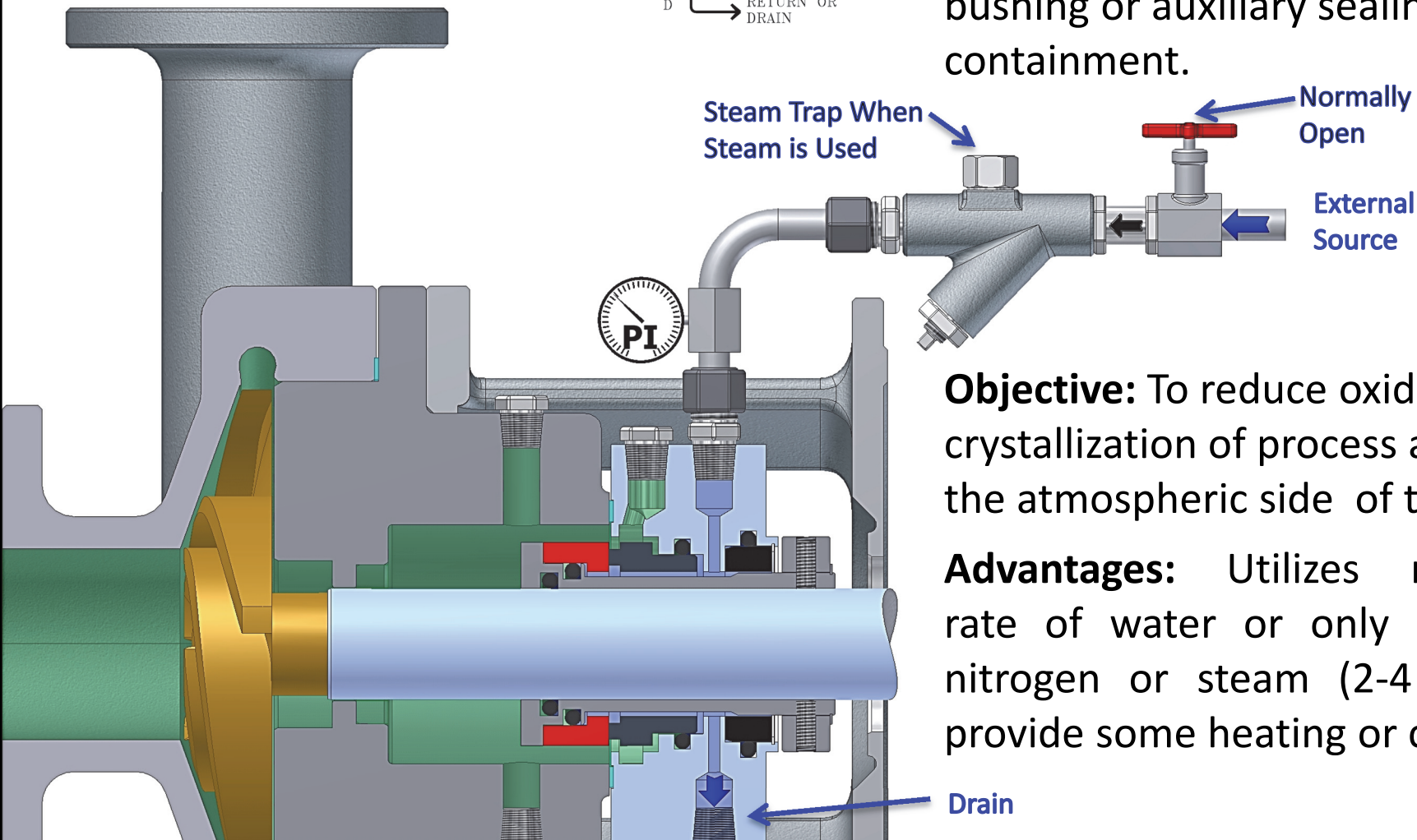


# Plan 62



**Description:** Plan 62 is an external source supplying quench (nitrogen, water, steam, etc.) on the atmosphere side of the seal. Typically used with a throttle bushing or auxiliary sealing device for containment.



**Objective:** To reduce oxidation, coking or crystallization of process accumulating on the atmospheric side of the seal.

**Advantages:** Utilizes miniscule flow rate of water or only a “whisper” of nitrogen or steam (2-4 psi). Can also provide some heating or cooling.